

# MasterMath

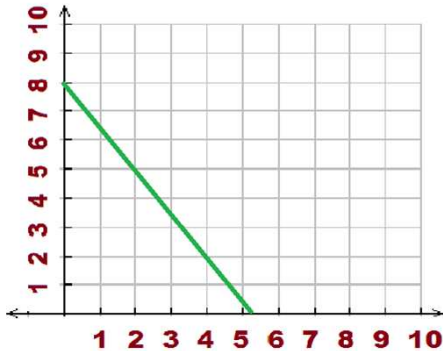
## Slope of a line

Name \_\_\_\_\_

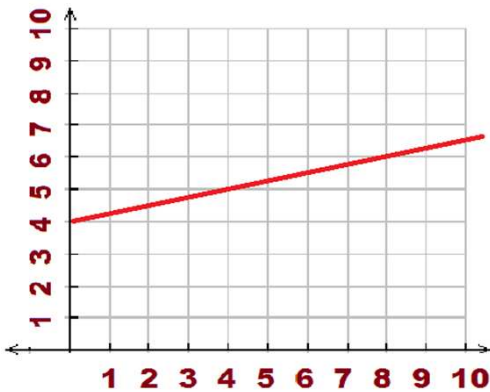
Date \_\_\_\_\_

Find the slope of these lines

1.



2.



3.

<b>x</b>	<b>1</b>	<b>2</b>	<b>3</b>	<b>4</b>	<b>5</b>	<b>6</b>
<b>y = 3x</b>	<b>3</b>	<b>6</b>	<b>9</b>	<b>12</b>	<b>15</b>	<b>18</b>

4. Line A has a slope of 5; Line B has a slope of -5. Are they parallel?

5. Draw a line with a slope of 5, and another with a slope of -5. Start both lines at (0, 0).

