

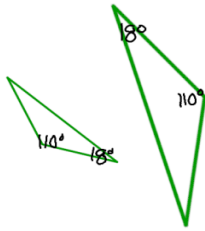
MasterMath

Name _____

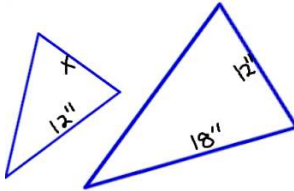
Date _____

Parallel Lines, Transversals and Similar Triangles

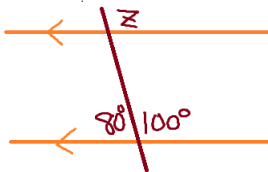
1. Are these triangles similar?



2. These are similar triangles. Find x .



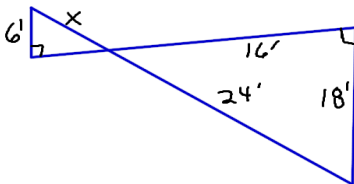
3. Find Angle z .



4. Triangle A and B are similar. Two of Triangle A's angles are 42° and 67° . Two of Triangle B's angles are 67° and 71° . How many degrees are in the third angle of Triangle B?

5. Triangle Z and Y are similar. Triangle Y's sides are 125% larger than the sides of Triangle Z, and Triangle Y's perimeter is 15'. What is the perimeter of Triangle Y?

6. Find x .



7. Are these triangles similar?

