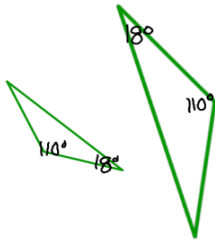


MasterMath

Name _____

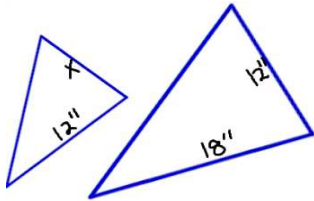
Date _____

1. Are these triangles similar?



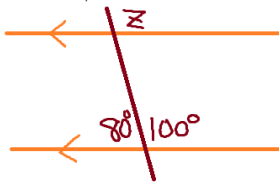
yes

2. These are similar triangles. Find x.



8"

3. Find Angle z.



80°

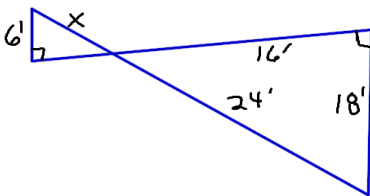
4. Triangle A and B are similar. Two of Triangle A's angles are 42° and 67° . Two of Triangle B's angles are 67° and 71° . How many degrees are in the third angle of Triangle B?

42°

5. Triangle Z and Y are similar. Triangle Y's sides are 125% larger than the sides of Triangle Z, and Triangle Y's perimeter is 15'. What is the perimeter of Triangle Y?

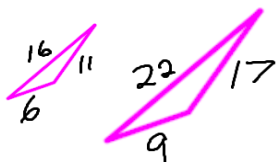
12'

6. Find x.



8'

7. Are these triangles similar?



no

